



7506024178983

GOMA SUJETADORA DE ESCAPE

MARCA	MODELO		
LEXUS	ES300	V6 3.0	95-96
LEXUS	LX470	V8 4.7	98-07
SCION	XA	L4 1.5	04-06
SCION	XB	L4 1.5	04-06
TOYOTA	AVALON	V6 3.0	95-97
TOYOTA	CAMRY	L4 2.2	95-96
TOYOTA	CAMRY	V6 3.0	95-96
TOYOTA	ECHO	L4 1.5	00-05
TOYOTA	LAND CRUISER	V8 4.7	98-07
TOYOTA	MR2 SPYDER	L4 1.8	00-05
TOYOTA	TACOMA	L4 2.7	05-23
TOYOTA	TACOMA	V6 3.5	16-23
TOYOTA	TACOMA	V6 4.0	05-15

OEM 17565-74280

*Parque Vehicular: 138,560



6575



7506024179980

SOPORTE PARA TRANSMISIÓN

MARCA	MODELO		
TOYOTA	LAND CRUISER	L6 4.0	91-92
TOYOTA	LAND CRUISER	L6 4.5	93-97
LEXUS	LX450	L6 4.5	96-97

OEM 12371-61050, 12371-58060

12371-61060, 12371-66030

*Parque Vehicular: 378



8795





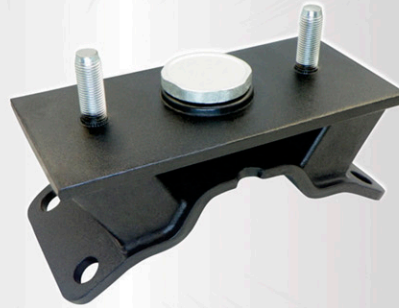
7506024179829

SOPORTE PARA TRANSMISIÓN AUTOMÁTICA

MARCA	MODELO		
TOYOTA	LAND CRUISER	V8 4.7	99-03
LEXUS	LX470	V8 4.7	98-07

OEM 12371-17140, 12371-50081
12371-50180

*Parque Vehicular: N/D



8796



7506024179942

SOPORTE PARA TRANSMISIÓN AUTOMÁTICA

MARCA	MODELO		
TOYOTA	COROLLA	L4 1.8	20-22
TOYOTA	COROLLA	L4 1.8 ELECTRIC	20-22
TOYOTA	COROLLA	L4 1.8 HYBRID	20-22
TOYOTA	PRIUS	L4 1.8	16-22
TOYOTA	PRIUS	L4 1.8 ELECTRIC	16-22
TOYOTA	PRIUS	L4 1.8 HYBRID	16-22

OEM 12372-37300, 12372-37301, 12372-37311
12372-37312, 12372-37313

*Parque Vehicular: 94,316



8797



7506024179959

SOPORTE PARA MOTOR IZQUIERDO Y DERECHO

MARCA	MODELO		
TOYOTA	HILUX	L4 2.8 DIESEL	19-21
TOYOTA	FORTUNER	L4 2.8 DIESEL	21-22

OEM 12361-0L020, 12361-73040
12361-30170

*Parque Vehicular: 30,735



8798





7506024179973

SOPORTE PARA MOTOR DERECHO

MARCA	MODELO		
HONDA	FIT	L4 1.5	07-13

OEM 50821-SAA-013
*Parque Vehicular: 21,382



8800



7506024179843

SOPORTE PARA MOTOR DERECHO

MARCA	MODELO		
FIAT	ALBEA	L4 1.8	09-11
FIAT	PALIO	L4 1.8	06-11

OEM 46808869
*Parque Vehicular: 771



8802



7506024179850

SOPORTE PARA MOTOR TRASERO

MARCA	MODELO		
FIAT	GRANDE PUNTO HATCHBACK	L4 1.4	05-08

OEM 55700441
*Parque Vehicular: 2,138



8803





7506024179867

SOPORTE PARA MOTOR TRASERO (4WD)

MARCA	MODELO		
DAI	7506024179867		
MITSUBISHI	OUTLANDER	L4 2.4	03-06

OEM MN100159, MR961162

*Parque Vehicular: 17,364



8804



7506024179874

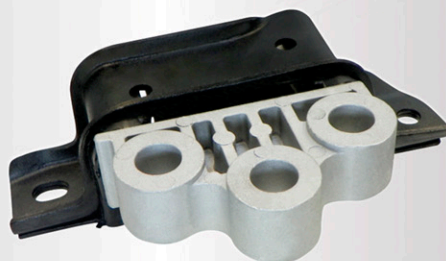
SOPORTE PARA MOTOR DERECHO

MARCA	MODELO		
DAI	7506024179874		
FIAT	GRANDE PUNTO HATCHBACK	L4 1.4	05-08

OEM 51816525, 51838808

55700431

*Parque Vehicular: 2,138



8805



7506024179881

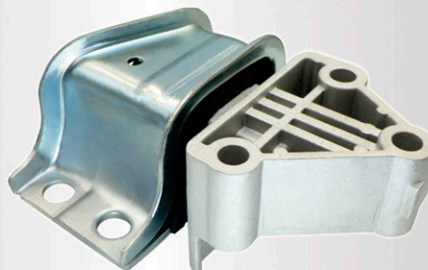
SOPORTE PARA MOTOR DERECHO

MARCA	MODELO		
DAI	7506024179881		
FIAT	DUCATO	L4 2.3	08-22

OEM 1343241080, 1358087080

1363376080, 71753299

*Parque Vehicular: N/D



8806





7506024179898

SOPORTE PARA TRANSMISIÓN STD.

MARCA	MODELO		
HONDA	CIVIC	L4 1.7	2005

OEM 50805-S5A-A01
*Parque Vehicular: 2,842



8807

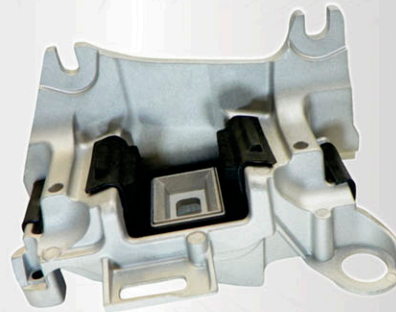


7506024179904

SOPORTE PARA TRANSMISIÓN STD.

MARCA	MODELO		
RENAULT	FLUENCE	L4 2.0	11-16

OEM 11220-0014-R, 11220-3341-R
11220-6729-R
*Parque Vehicular: 21,228



8808



7506024179966

SOPORTE PARA MOTOR DERECHO

MARCA	MODELO		
VOLKSWAGEN	TIGUAN	L4 1.4	13-17

OEM 5N0-199-262-D
*Parque Vehicular: N/D



8809-H



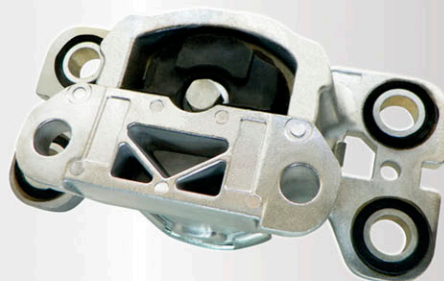
8810



7506024179911

SOPORTE PARA TRANSMISIÓN

MARCA	MODELO		
JAGUAR	E-PACE	L4 2.0	18-23
JAGUAR	E-PACE	L4 2.0 ELECTRIC	21-22
JAGUAR	E-PACE	L4 2.0 HYBRID	21-22
LAND ROVER	LR2	L4 2.0	13-15
LAND ROVER	LR2	L6 3.2	08-12
LAND ROVER	RANGE ROVER EVOQUE	L4 2.0	12-16
VOLVO	S60	L4 2.0	15-16
VOLVO	S60	L5 2.5	12-16
VOLVO	S60	L6 3.0	11-16
VOLVO	S60 CROSS COUNTRY	L5 2.5	2016
VOLVO	S80	L6 3.0	08-15
VOLVO	S80	L6 3.2	07-14
VOLVO	V60	L5 2.5	15-16
VOLVO	V60	L6 3.0	15-16
VOLVO	V6 CROSS COUNTRY	L5 2.5	15-16
VOLVO	V70	L6 3.2	08-10
VOLVO	XC60	L5 2.5	15-16
VOLVO	XC60	L6 3.0	10-16
VOLVO	XC60	L6 3.2	10-16
VOLVO	XC70	L5 2.5	2016
VOLVO	XC70	L6 3.0	09-15
VOLVO	XC70	L6 3.2	08-15



OEM 31257727, 31277315
31316875, J9C3963, 31316877
*Parque Vehicular: 6,457

8811



7506024179928

SOPORTE PARA MOTOR DERECHO

MARCA	MODELO		
PEUGEOT	308	L4 1.6	16-20

OEM 9800895680, 9809162280
*Parque Vehicular: 782



8812



7506024179935

SOPORTE PARA MOTOR TRASERO

MARCA	MODELO		
PEUGEOT	208	L3 1.2	19-20
PEUGEOT	308	L4 1.6	16-20
PEUGEOT	3008	L4 1.6	18-20
PEUGEOT	5008	L4 1.6	19-20
PEUGEOT	PARTNER	L4 1.6	09-22

OEM 9811786680
*Parque Vehicular: 20,678



8813-KIT



7506024173254

BASE PARA AMORTIGUADOR FRONTAL IZQUIERDA Y DERECHA

MARCA	MODELO		
LEXUS	UX200	L4 2.0	19-22
LEXUS	UX250H	L4 2.0	19-23
LEXUS	UX250H	L4 2.0 ELECTRIC	19-23
LEXUS	UX250H	L4 2.0 HYBRID	19-23
TOYOTA	C-HR	L4 2.0	18-22
TOYOTA	COROLLA	L4 1.8	19-23
TOYOTA	COROLLA	L4 1.8 ELECTRIC	20-23
TOYOTA	COROLLA	L4 1.8 HYBRID	20-23
TOYOTA	COROLLA	L4 2.0	19-23
TOYOTA	COROLLA CROSS	L4 2.0	22-23
TOYOTA	COROLLA CROSS	L4 2.0 ELECTRIC	20-23
TOYOTA	PRIUS	L4 1.8	16-22
TOYOTA	PRIUS	L4 1.8 ELECTRIC	16-22
TOYOTA	PRIUS	L4 1.8 HYBRID	19-22
TOYOTA	PRIUS AWD-E	L4 1.8	19-22
TOYOTA	PRIUS AWD-E	L4 1.8 ELECTRIC	19-22
TOYOTA	PRIUS AWD-E	L4 1.8 HYBRID	19-22
TOYOTA	PRIUS PRIME	L4 1.8	17-22
TOYOTA	PRIUS PRIME	L4 1.8 ELECTRIC	17-22
TOYOTA	PRIUS PRIME	L4 1.8 HYBRID	17-22



OEM 48609-02320

48619-47020

*Parque Vehicular: 170,869

8814



7506024173261

BASE PARA AMORTIGUADOR TRASERA IZQUIERDA Y DERECHA (OVALADA)

MARCA	MODELO		
AUDI	A3	L4 2.0	06-09
AUDI	A3 QUATTRO	L4 2.0	2009
AUDI	A3 QUATTRO	V6 3.2	06-09
SEAT	ALTEA	L4 1.4	06-15
SEAT	ALTEA	L4 1.8	06-15
SEAT	ALTEA	L4 2.0	06-15
SEAT	LEON	L4 1.4	06-13
SEAT	LEON	L4 1.8	06-13
SEAT	LEON	L4 2.0	06-13
SEAT	TOLEDO	L4 2.0	06-12
VOLKSWAGEN	BORA	L4 1.9	06-10
VOLKSWAGEN	BORA	L5 2.5	06-10
VOLKSWAGEN	EOS	L4 2.0	07-17
VOLKSWAGEN	GOLF	L4 2.0	06-11
VOLKSWAGEN	GTI	L4 2.0	2008
VOLKSWAGEN	JETTA	L4 1.9 DIESEL	05-06
VOLKSWAGEN	JETTA	L4 2.0	05-09
VOLKSWAGEN	JETTA	L4 2.0 DIESEL	2009
VOLKSWAGEN	JETTA	L5 2.5	05-08
VOLKSWAGEN	PASSAT	L4 2.0	12-16
VOLKSWAGEN	R32	V6 3.2	2008
VOLKSWAGEN	RABBIT	L5 2.5	2008



OEM 1K0 513 353H

*Parque Vehicular: 466,598



7506024173278

SOPORTE PARA MOTOR IZQUIERDO

MARCA	MODELO		
AUDI	A4	L4 1.8	02-06
AUDI	A4	V6 3.0	02-06
AUDI	A4	V6 3.2	05-09

OEM 8E0 199 379AF

8E0 199 379D

*Parque Vehicular: 2,165



8815-H



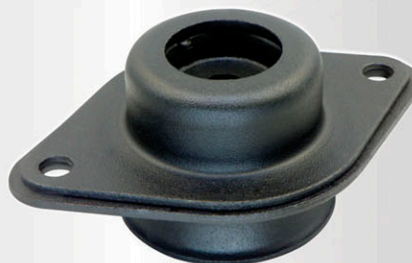
7506024173292

BASE PARA AMORTIGUADOR TRASERA IZQUIERDA Y DERECHA

MARCA	MODELO		
NISSAN	ALTIMA	L4 2.0	19-23
NISSAN	ALTIMA	L4 2.5	19-23

OEM 55320-6CA0A

*Parque Vehicular: 15,805



8817



7506024173322

BASE PARA AMORTIGUADOR TRASERA IZQUIERDA Y DERECHA

MARCA	MODELO		
MAZDA	CX-5	L4 2.2 DIESEL	2019
MAZDA	CX-5	L4 2.5	20-23
MAZDA	CX-9	L4 2.5	19-23

OEM KF4928380

GBJD-28-380

*Parque Vehicular: 73,278



8820





7506024173339

SOPORTE PARA MOTOR DERECHO

MARCA	MODELO		
SUBARU	BAJA	H4 2.5	04-06
SUBARU	LEGACY	H4 2.5	00-04
SUBARU	OUTBACK	H4 2.5	00-04

OEM 41022AG021

*Parque Vehicular: N/D



8821



7506024173346

SOPORTE PARA MOTOR IZQUIERDO

MARCA	MODELO		
SUBARU	BAJA	H4 2.5	04-06
SUBARU	LEGACY	H4 2.5	00-04
SUBARU	OUTBACK	H4 2.5	00-04

OEM 41022AG031

*Parque Vehicular: N/D



8822



7506024173353

BASE PARA AMORTIGUADOR FRONTAL IZQUIERDA Y DERECHA

MARCA	MODELO		
HYUNDAI	ELANTRA GT	L4 1.8	2013
HYUNDAI	ELANTRA GT	L4 2.0	14-17
KIA	SOUL	L4 1.6	14-19
KIA	SOUL	L4 2.0	14-19
KIA	SOUL EV	ELECTRIC	15-19

OEM 54610-B2000, 54610-B2050, 54610-A5000
54612-3S050, 54612-3S050

*Parque Vehicular: 45,805



8823-KIT





7506024173360

BASE PARA AMORTIGUADOR FRONTAL IZQUIERDA Y DERECHA

MARCA	MODELO		
KIA	SORENTO	L4 1.6	20-21
KIA	SORENTO	L4 1.6 ELECTRIC	20-21
KIA	SORENTO	L4 2.0	16-18
KIA	SORENTO	L4 2.4	16-20
KIA	SORENTO	L4 2.5	21-23
KIA	SORENTO	V6 3.3	16-20



OEM 54610-C6000
54612-C5000, 54610-R5000
*Parque Vehicular: 37,560

8824-KIT



7506024173384

BASE PARA AMORTIGUADOR TRASERA IZQUIERDA Y DERECHA

MARCA	MODELO		
MAZDA	3	L4 2.0	14-18
MAZDA	3	L4 2.5	14-18
MAZDA	6	L4 2.5	14-21
MAZDA	CX-3	L4 2.0	16-23
MAZDA	CX-5	L4 2.0	13-19

OEM KD45-28-380A, BJS7-28-380
BJS8-28-380, KD45-28-380
*Parque Vehicular: 111, 427



8826



7506024173506

SOPORTE PARA MOTOR DERECHO

MARCA	MODELO		
MAZDA	6	L4 2.3	03-08
MAZDA	6	V6 3.0	03-08

OEM GK2C-39-060, GK2C-39-060D, GK2C-39-060A
GK2C-39-060BGK2C-39-060C
*Parque Vehicular: N/D



8936-H



7506024179256

BUJE PARA HORQUILLA TRASERA IZQUIERDO Y DERECHO

MARCA	MODELO		
FORD	FOCUS	L4 2.0	12-18

OEM 1692849, BV615K896AB
31350696, 31360695

*Parque Vehicular: 186,916



64891



7506024179614

BUJE PARA HORQUILLA INFERIOR CHICO

MARCA	MODELO		
CHEVROLET	CAPTIVA	L4 2.4	08-15
CHEVROLET	CAPTIVA SPORT	L4 2.4	12-15
CHEVROLET	CAPTIVA SPORT	V6 3.6	12-15
CHEVROLET	EQUINOX	L4 2.4	10-17
CHEVROLET	EQUINOX	V6 3.6	08-17
GMC	TERRAIN	L4 2.4	10-17
GMC	TERRAIN	V6 3.0	10-12
GMC	TERRAIN	V6 3.6	13-17
PONTIAC	TERRAIN	V6 3.6	08-09
SATURN	VUE	L4 2.4 ELECTRIC	08-09
SATURN	VUE	L4 2.4 HYBRID	08-09
SATURN	VUE	L4 2.4	08-10
SATURN	VUE	V6 3.5	08-10
SATURN	VUE	V6 3.5	08-10
SUZUKI	XL-7	V6 3.6	07-09

OEM 25851984

*Parque Vehicular: 68,708



DAI-1403045





7506024173155

BUJE PARA HORQUILLA INFERIOR IZQUIERDO GRANDE

MARCA	MODELO		
DODGE	DURANGO	V6 3.6	11-15
DODGE	DURANGO	V8 5.7	11-15
JEEP	GRAND CHEROKEE	V6 3.0	14-15
JEEP	GRAND CHEROKEE	V6 3.6	11-15
JEEP	GRAND CHEROKEE	V8 5.7	11-15
JEEP	GRAND CHEROKEE	V8 6.4	2012
JEEP	GRAND CHEROKEE	V8 6.4	14-15

OEM K201334, ZY68069861

*Parque Vehicular: 23,768



DAI-1406139



7506024173162

BUJE PARA HORQUILLA INFERIOR DERECHO GRANDE

MARCA	MODELO		
DODGE	DURANGO	V6 3.6	11-15
DODGE	DURANGO	V8 5.7	11-15
JEEP	GRAND CHEROKEE	V6 3.0	14-15
JEEP	GRAND CHEROKEE	V6 3.6	11-15
JEEP	GRAND CHEROKEE	V8 5.7	11-15
JEEP	GRAND CHEROKEE	V8 6.4	2012
JEEP	GRAND CHEROKEE	V8 6.4	14-15

OEM K201335, ZY68069862

*Parque Vehicular: 23,768



DAI-1406140





7506024173131

BUJE PARA HORQUILLA INFERIOR CHICO

MARCA	MODELO		
DODGE	DURANGO	V6 3.6	11-15
DODGE	DURANGO	V8 5.7	11-15
JEEP	GRAND CHEROKEE	V6 3.0	14-15
JEEP	GRAND CHEROKEE	V6 3.6	11-15
JEEP	GRAND CHEROKEE	V8 5.7	11-15
JEEP	GRAND CHEROKEE	V8 6.4	2012
JEEP	GRAND CHEROKEE	V8 6.4	14-15

OEM 05168158AA, 5168158AA, 05168158AB, 5168158AB
05168159AA, 5168159AA, 05168159AB, 5168159AB
068022600AD, 68022600AD, 068022601AD, 68022601AD

*Parque Vehicular: 23,768



DAI-1406142



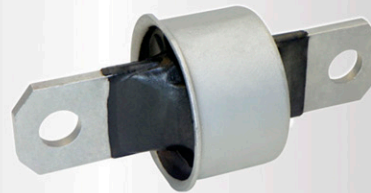
7506024179645

BUJE PARA TIRANTE TRASERO TIPO MOÑO

MARCA	MODELO		
FORD	FOCUS	L4 2.0	00-11
FORD	FOCUS	L4 2.3	03-07
MAZDA	3	L4 2.0	04-09
MAZDA	3	L4 2.3	04-09
MAZDA	5	L4 2.3	06-10
MAZDA	5	L4 2.5	12-15
VOLVO	C30	L5 2.5	08-13
VOLVO	C70	L5 2.5	06-13
VOLVO	S40	L4 1.9	2004
VOLVO	S40	L5 2.4	05-10
VOLVO	S40	L5 2.5	05-11
VOLVO	V50	L5 2.4	05-10
VOLVO	V50	L5 2.5	05-11

OEM 30666821, 98AG5K896AB

*Parque Vehicular: 349,859



DAI-1408114



7506024178952

BUJE PARA HORQUILLA CHICO

MARCA	MODELO		
FORD	C-MAX	L4 2.0	13-18
FORD	ESCAPE	L4 1.6	13-19
FORD	FOCUS	L4 2.0	12-19
LINCOLN	MKC	L4 2.0	13-19
MAZDA	3	L4 2.0	03-13
MAZDA	3	L4 2.3	03-13
MAZDA	3	L4 2.5	03-13
MAZDA	5	L4 2.3	03-15
MERCURY	MARINER	L4 2.3	13-19
VOLVO	C30	L4 1.6	07-10
VOLVO	C30	L5 2.5	07-10
VOLVO	S40	L4 1.8	04-11
VOLVO	S40	L5 2.4	04-11

OEM 1 702 983S1, B32H34470

*Parque Vehicular: 407,418



DAI-1413003



7506024179676

BUJE PARA EJE TRASERO IZQUIERDO Y DERECHO

MARCA	MODELO		
NISSAN	APRIO	L4 1.6	07-17
RENAULT	LOGAN	L4 1.6	07-14
RENAULT	SANDERO	L4 1.6	07-20
RENAULT	STEPWAY	L4 1.6	10-20

OEM 6001549988, 8200287912, 6001549989

*Parque Vehicular: 109,201



DAI-1416040





7506024178976

BUJE PARA HORQUILLA INFERIOR CHICO

MARCA	MODELO		
CITROEN	BERLINGO	L4 1.8	97-04
PEUGEOT	306	L4 1.6	97-04
PEUGEOT	PARTNER	L4 1.6	04-12

OEM 96110483, 3520H5S1

*Parque Vehicular: 34,763



DAI-1417006



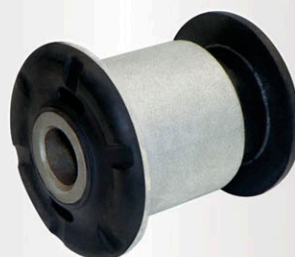
7506024179683

BUJE PARA HORQUILLA SUPERIOR

MARCA	MODELO		
AUDI	Q7	V6 3.0	09-15
AUDI	Q7	V6 3.0 DIESEL	07-10
AUDI	Q7	V8 4.2	07-10
PORSCHE	CAYENNE	V6 3.2	04-06
PORSCHE	CAYENNE	V6 3.6	08-10
PORSCHE	CAYENNE	V8 4.5	03-06
PORSCHE	CAYENNE	V8 4.8	08-10
VOLKSWAGEN	TOUAREG	V6 3.0	11-16
VOLKSWAGEN	TOUAREG	V6 3.0 DIESEL	11-16
VOLKSWAGEN	TOUAREG	V6 3.0 ELECTRIC	11-16
VOLKSWAGEN	TOUAREG	V6 3.0 HYBRID	11-16
VOLKSWAGEN	TOUAREG	V6 3.6	11-17

OEM 7L8-407-183

*Parque Vehicular: 10,815



DAI-1426028





7506024179690

BUJE PARA HORQUILLA INFERIOR EXTERIOR

MARCA	MODELO		
AUDI	Q7	V6 3.0	09-15
AUDI	Q7	V6 3.0 DIESEL	07-10
AUDI	Q7	V8 4.2	07-10
PORSCHE	CAYENNE	V6 3.2	04-06
PORSCHE	CAYENNE	V6 3.6	08-10
PORSCHE	CAYENNE	V8 4.5	03-06
PORSCHE	CAYENNE	V8 4.8	08-10
VOLKSWAGEN	TOUAREG	V6 3.0	11-16
VOLKSWAGEN	TOUAREG	V6 3.0 DIESEL	11-16
VOLKSWAGEN	TOUAREG	V6 3.0 ELECTRIC	11-16
VOLKSWAGEN	TOUAREG	V6 3.0 HYBRID	11-16
VOLKSWAGEN	TOUAREG	V6 3.6	11-17

OEM 7L0-412-333-A

*Parque Vehicular: 10,815



DAI-1426030



7506024179706

BUJE PARA HORQUILLA INFERIOR CHICO

MARCA	MODELO		
AUDI	Q7	V6 3.0	09-15
AUDI	Q7	V6 3.0 DIESEL	07-10
AUDI	Q7	V8 4.2	07-10
PORSCHE	CAYENNE	V6 3.2	04-06
PORSCHE	CAYENNE	V6 3.6	08-10
PORSCHE	CAYENNE	V8 4.5	03-06
PORSCHE	CAYENNE	V8 4.8	08-10
VOLKSWAGEN	TOUAREG	V6 3.0	11-16
VOLKSWAGEN	TOUAREG	V6 3.0 DIESEL	11-16
VOLKSWAGEN	TOUAREG	V6 3.0 ELECTRIC	11-16
VOLKSWAGEN	TOUAREG	V6 3.0 HYBRID	11-16
VOLKSWAGEN	TOUAREG	V6 3.6	11-17

OEM 7L0-407-183

*Parque Vehicular: 10,815



DAI-1426035





7506024173124

TORNILLO ESTABILIZADOR FRONTAL IZQUIERDO Y DERECHO

DAI-2126019



MARCA	MODELO		
AUDI	A4	L4 2.0	09-20
AUDI	A4 ALLROAD	L4 2.0	17-21
AUDI	A4 ALLROAD	L4 2.0 HYBRID	2021
AUDI	A4 QUATTRO	L4 2.0	09-23
AUDI	A4 QUATTRO	L4 2.0 HYBRID	21-23
AUDI	A4 QUATTRO	V6 3.2	2009
AUDI	A5	L4 2.0	10-14
AUDI	A5 QUATTRO	L4 2.0	10-23
AUDI	A5 QUATTRO	L4 2.0 ELECTRIC	21-23
AUDI	A5 QUATTRO	L4 2.0 HYBRID	21-23
AUDI	A5 QUATTRO	V6 3.2	08-10
AUDI	A5 SPORTBACK	L4 2.0	18-23
AUDI	A5 SPORTBACK	L4 2.0 ELECTRIC	20-23
AUDI	A5 SPORTBACK	L4 2.0 HYBRID	20-23
AUDI	A6	L4 2.0	12-18
AUDI	A6 ALLROAD	V6 3.0	20-23
AUDI	A6 ALLROAD	V6 3.0 ELECTRIC	20-23
AUDI	A6 ALLROAD	V6 3.0 HYBRID	20-23
AUDI	A6 QUATTRO	L4 2.0	12-23
AUDI	A6 QUATTRO	L4 2.0 ELECTRIC	21-23
AUDI	A6 QUATTRO	L4 2.0 HYBRID	21-23
AUDI	A6 QUATTRO	V6 3.0	13-23
AUDI	A6 QUATTRO	V6 3.0 DIESEL	14-16
AUDI	A6 QUATTRO	V6 3.0 ELECTRIC	19-23
AUDI	A6 QUATTRO	V6 3.0 HYBRID	19-23
AUDI	A7 QUATTRO	V6 3.0	12-20
AUDI	A7 QUATTRO	V6 3.0 DIESEL	14-16
AUDI	A7 QUATTRO	V6 3.0 ELECTRIC	19-20
AUDI	A7 SPORTBACK	L4 2.0	21-22
AUDI	A7 SPORTBACK	L4 2.0 ELECTRIC	21-22
AUDI	A7 SPORTBACK	L4 2.0 HYBRID	21-22
AUDI	A7 SPORTBACK	V6 3.0	19-23
AUDI	A7 SPORTBACK	V6 3.0 ELECTRIC	19-23
AUDI	A7 SPORTBACK	V6 3.0 HYBRID	19-23
AUDI	A8 QUATTRO	V6 3.0	13-23
AUDI	A8 QUATTRO	V6 3.0 DIESEL	14-16

MARCA	MODELO		
AUDI	A8 QUATTRO	V8 4.0	13-22
AUDI	A8 QUATTRO	V8 4.0 ELECTRIC	19-21
AUDI	A8 QUATTRO	V8 4.0 HYBRID	19-22
AUDI	A8 QUATTRO	V8 4.2	11-12
AUDI	A8 QUATTRO	W 12 6.3	12-16
AUDI	ALLROAD	L4 2.0	13-16
AUDI	E-TRON QUATTRO	ELECTRIC	19-23
AUDI	E-TRON S	ELECTRIC	22-23
AUDI	E-TRON S SPORTBACK	ELECTRIC	22-23
AUDI	E-TRON SPORTBACK	ELECTRIC	20-23
AUDI	Q5	L4 2.0	11-21
AUDI	Q5	L4 2.0 ELECTRIC	13-16
AUDI	Q5	L4 2.0 ELECTRIC	2021
AUDI	Q5	L4 2.0 HYBRID	13-16
AUDI	Q5	L4 2.0 HYBRID	2021
AUDI	Q5	V6 3.0	13-17
AUDI	Q5	V6 3.0 DIESEL	13-16
AUDI	Q5	V6 3.2	09-10
AUDI	Q5 PHEV	L4 2.0	2021
AUDI	Q5 PHEV	L4 2.0 ELECTRIC	2021
AUDI	Q5 PHEV	L4 2.0 HYBRID	2021
AUDI	Q5 SPORTBACK	L4 2.0	2021
AUDI	Q5 SPORTBACK	L4 2.0 ELECTRIC	2021
AUDI	Q5 SPORTBACK	L4 2.0 HYBRID	2021
AUDI	Q7	L4 2.0	17-23
AUDI	Q7	L4 2.0 ELECTRIC	2023
AUDI	Q7	L4 2.0 HYBRID	2023
AUDI	Q7	V6 3.0	17-23

OEM 8K0-411-317-D
8K0-411-317-E, 8K0-411-317-C
*Parque Vehicular: 83,721

Continuación...



7506024173124

TORNILLO ESTABILIZADOR FRONTAL IZQUIERDO Y DERECHO

MARCA	MODELO		
AUDI	Q7	V6 3.0 ELECTRIC	20-23
AUDI	Q7	V6 3.0 HYBRID	20-23
AUDI	Q8	V6 3.0	19-23
AUDI	Q8	V6 3.0 ELECTRIC	19-23
AUDI	Q8	V6 3.0 HYBRID	19-23
AUDI	RS Q8	V8 4.0	20-21
AUDI	RS Q8	V8 4.0 ELECTRIC	20-21
AUDI	RS5	V6 2.9	18-23
AUDI	RS5	V8 4.2	13-15
AUDI	RS5 SPORTBACK	V6 2.9	19-23
AUDI	RS6 AVANT	V8 4.0	21-23
AUDI	RS6 AVANT	V8 4.0 ELECTRIC	21-23
AUDI	RS6 AVANT	V8 4.0 HYBRID	21-23
AUDI	RS7	V8 4.0	14-18
AUDI	RS7 SPORTBACK	V8 4.0	21-23
AUDI	RS7 SPORTBACK	V8 4.0 ELECTRIC	21-23
AUDI	RS7 SPORTBACK	V8 4.0 HYBRID	21-23
AUDI	S4	V6 3.0	10-20
AUDI	S5	V6 3.0	10-23
AUDI	S5	V8 4.2	08-12
AUDI	S5 SPORTBACK	V6 3.0	18-23
AUDI	S6	V6 2.9	20-23
AUDI	S6	V6 2.9 ELECTRIC	20-23
AUDI	S6	V6 2.9 HYBRID	20-23
AUDI	S6	V8 4.0	13-18
AUDI	S7	V6 2.9	2020
AUDI	S7	V6 2.9 ELECTRIC	2020
AUDI	S7	V8 4.0	13-18

DAI-2126019



MARCA	MODELO		
AUDI	S7 SPORTBACK	V6 2.9	20-23
AUDI	S7 SPORTBACK	V6 2.9 ELECTRIC	20-23
AUDI	S7 SPORTBACK	V6 2.9 HYBRID	20-23
AUDI	S8	V8 4.0	13-23
AUDI	S8	V8 4.0 ELECTRIC	20-23
AUDI	S8	V8 4.0 HYBRID	20-23
AUDI	SQ5	V6 3.0	14-22
AUDI	SQ5 SPORTBACK	V6 3.0	21-22
AUDI	SQ7	V8 4.0	20-23
AUDI	SQ7	V8 4.0 ELECTRIC	20-23
AUDI	SQ7	V8 4.0 HYBRID	20-23
AUDI	SQ8	V8 4.0	20-23
AUDI	SQ8	V8 4.0 ELECTRIC	20-23
AUDI	SQ8	V8 4.0 HYBRID	20-23

OEM 8K0-411-317-D
8K0-411-317-E, 8K0-411-317-C
*Parque Vehicular: 83,721



7506024131230

BUJES PARA HORQUILLA CHICO

MARCA	MODELO		
CHEVROLET	OPTRA	L4 2.0	06-10
CHEVROLET	CAVALIER	L4 2.3	95-05
CHEVROLET	CAVALIER	L4 2.3	1995
CHEVROLET	CAVALIER	L4 2.4	96-02
CHEVROLET	CLASSIC	L4 2.2	04-05
CHEVROLET	MALIBU	L4 2.4	97-99
CHEVROLET	MALIBU	V6 3.1	97-03
OLDSMOBILE	ALERO	L4 2.2	02-04
OLDSMOBILE	ALERO	L4 2.4	99-01
OLDSMOBILE	ALERO	V6 3.4	99-04
OLDSMOBILE	CUTLASS	V6 3.1	97-99
OLDSMOBILE	CUTLASS SUPREME	V6 3.1	1997
PONTIAC	GRAND AM	L4 2.2	02-05
PONTIAC	GRAND AM	L4 2.4	99-01
PONTIAC	GRAND AM	V6 3.4	99-05
PONTIAC	SUNFIRE	L4 2.2	95-05
PONTIAC	SUNFIRE	L4 2.3	1995
PONTIAC	SUNFIRE	L4 2.4	96-02
SUZUKI	RENO	L4 2.0	05-08



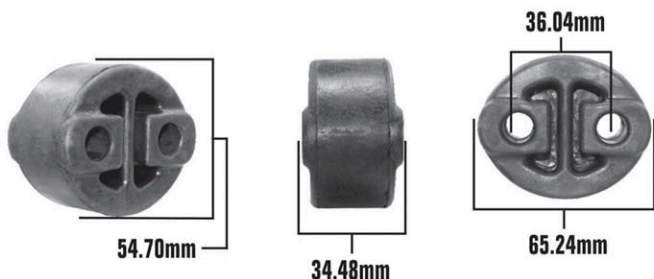
DAI-K-6284



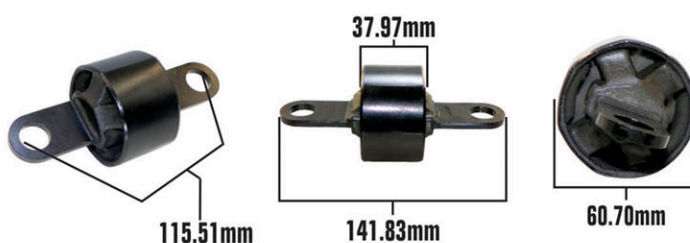
OEM 96378346, 22645684
*Parque Vehicular: 20,5911

MEDIDAS

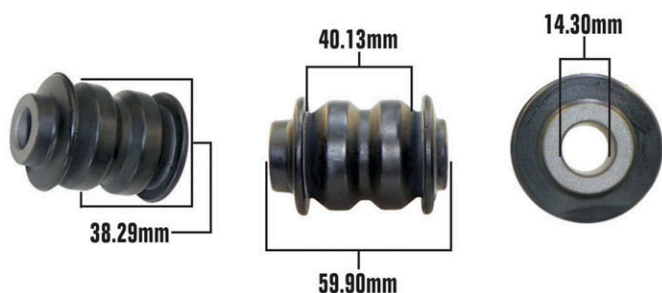
6575



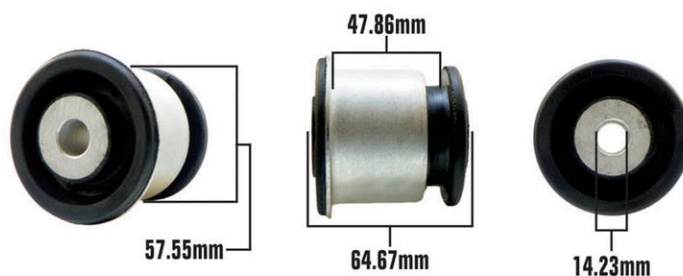
64891



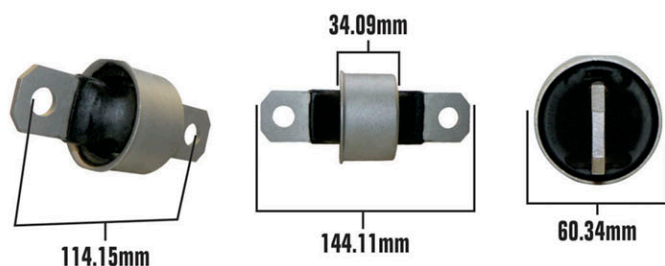
DAI-1403045



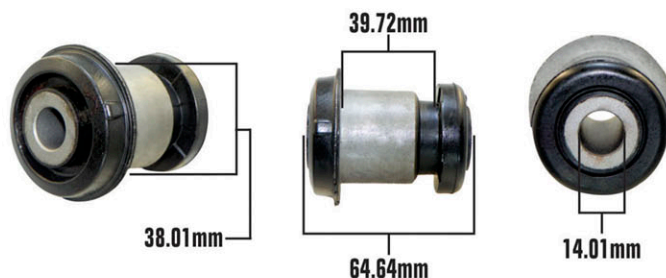
DAI-1406142



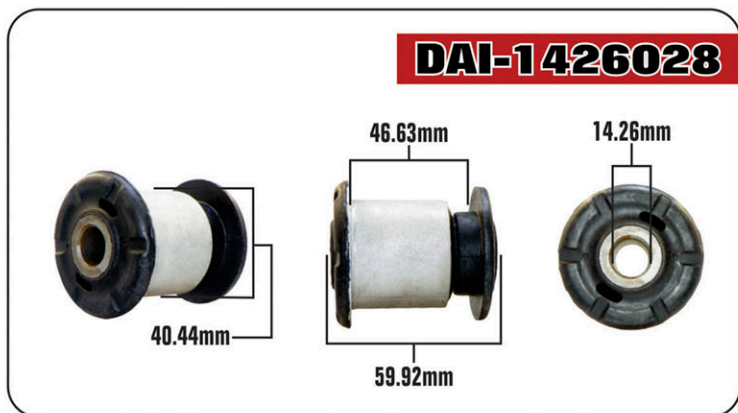
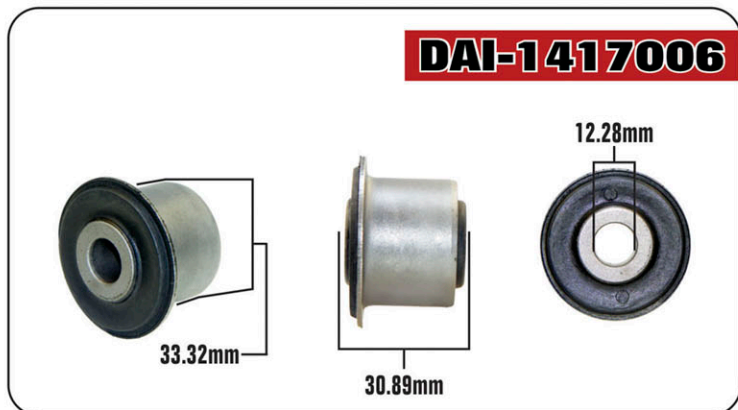
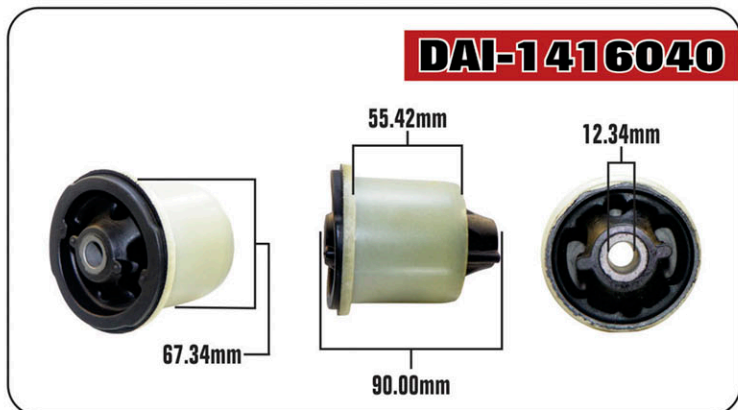
DAI-1408114



DAI-1413003



MEDIDAS



En espera de su apoyo para el buen desplazamiento de este producto quedo de ustedes.
Atentamente

Dirección Comercial